



Curie Point Injector JCI-22

Thermal extraction

Plasticizer and Bromine Flame-retardant in Resin

JCI-22: Pre-heat: ON (150°C), Purge: ON, **Pyrolysis time: 15 sec, Pyrofoil: F358**

GC-2010: Constant flow mode: Column flow rate: 2.0 ml/min, Velocity: 72.1 cm/sec

Injector temp: 320°C, Interface temp: 320°C, **Splitless injection: 1.0 min**

Head pressure: 49.2 kpa (at 40°C), Septum purge: 10 ml/min, Split ratio: 1/50

Total flow rate: 112.0 ml/min, Analysis time: 30 min

Oven temp: 40°C (3 min)-(20°C/min)-320°C (13 min)

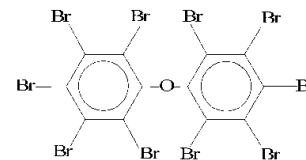
GCMS-QP2010: **Mass range: 45 ~ 1090**, EM gain: 1.44 kv, Solvent Cut: 2.5 min

Scan time: 3-30 min, Ion source temp: 250°C, Interval time: 0.5 sec

Column: DB-1: ID=0.25 mm, L=15 m, T=0.1µm, Serial NO.: AA8277913B

Deca-BDPE

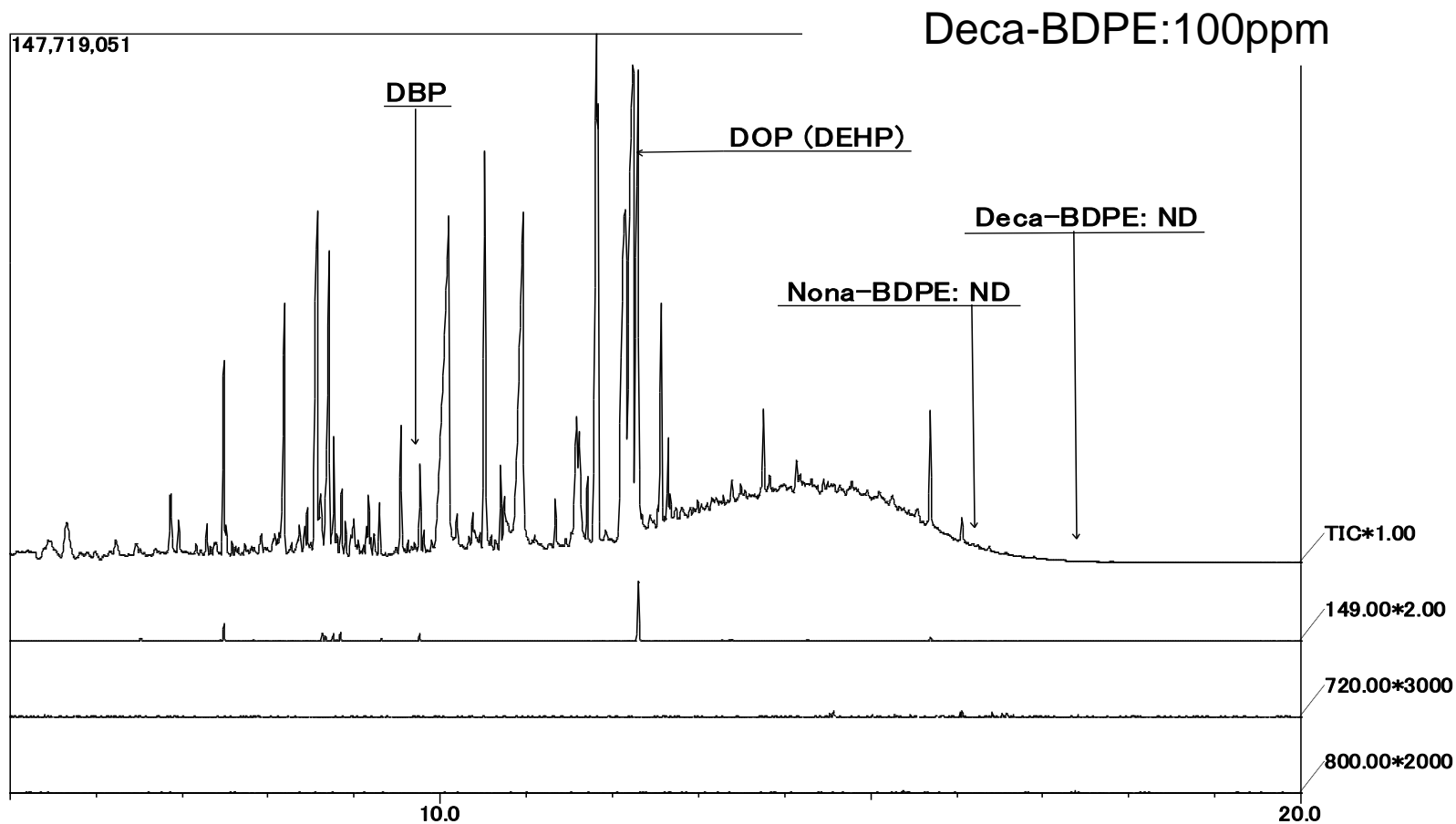
deca-brominated diphenyl ether



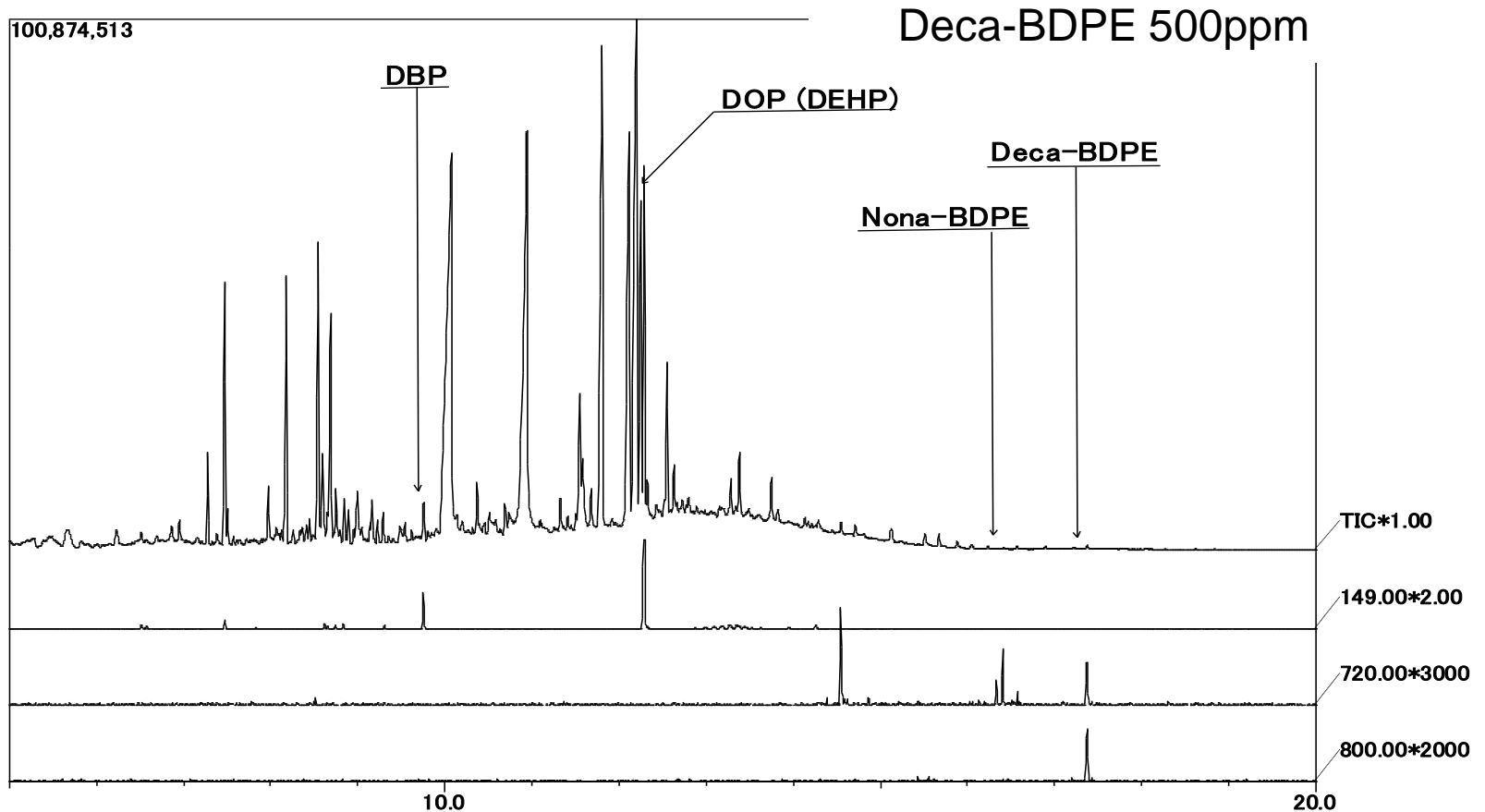
JCI-22

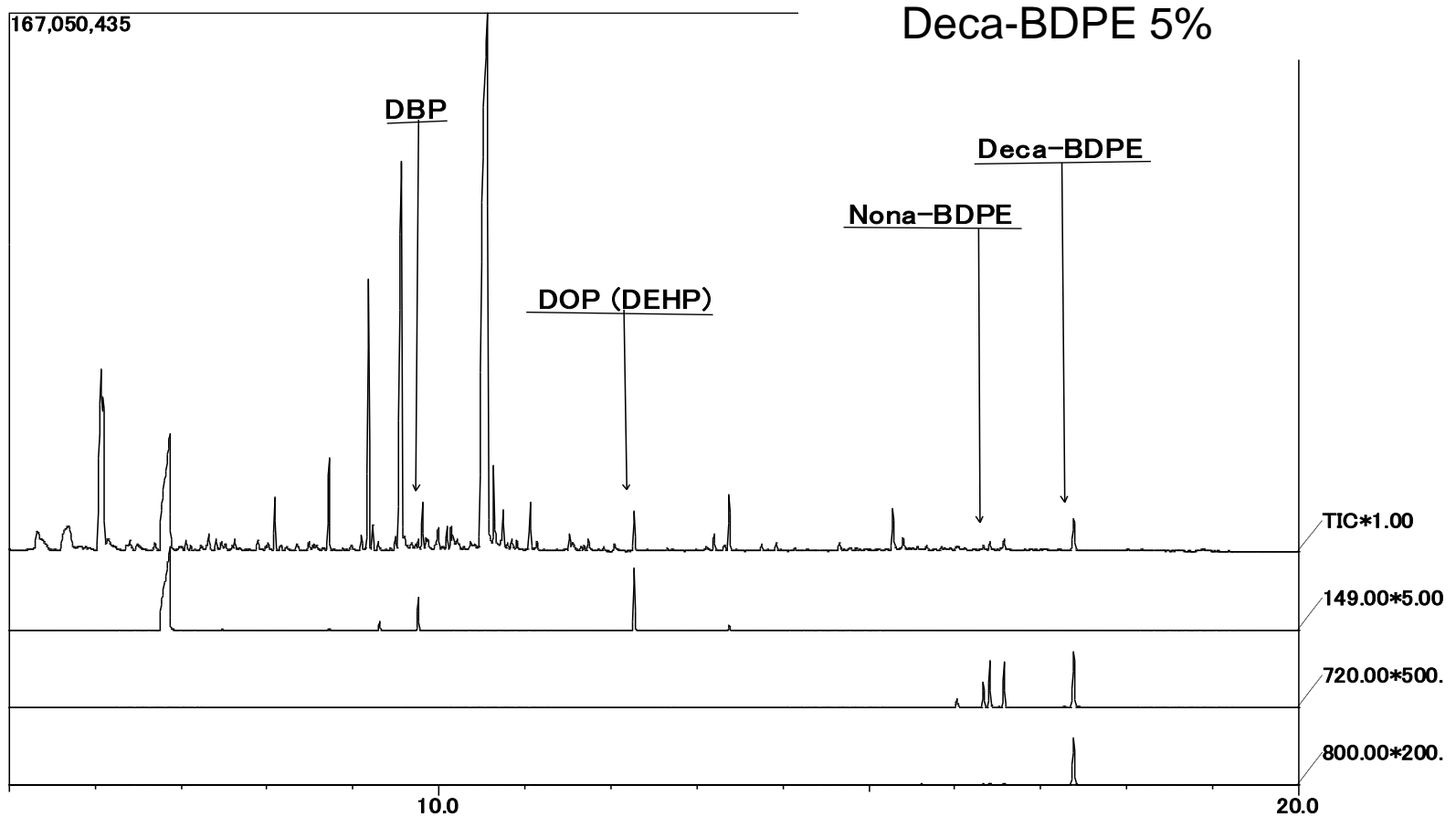
JAS-15M II

Japan Analytical Industry Co., Ltd



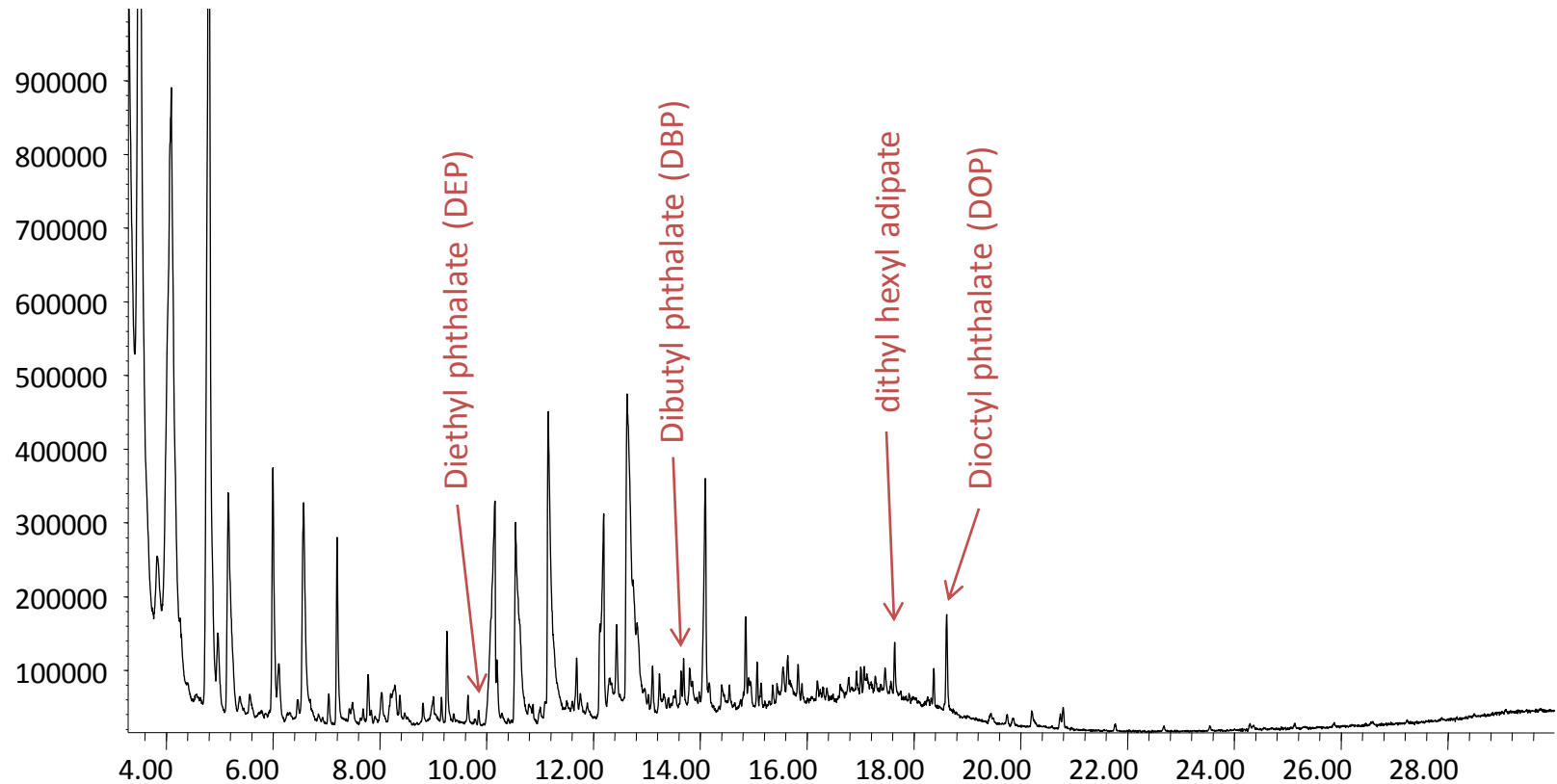
Plasticizer and Bromine Flame-retardant in Resin





Plasticizer in circuit board

アバダンス

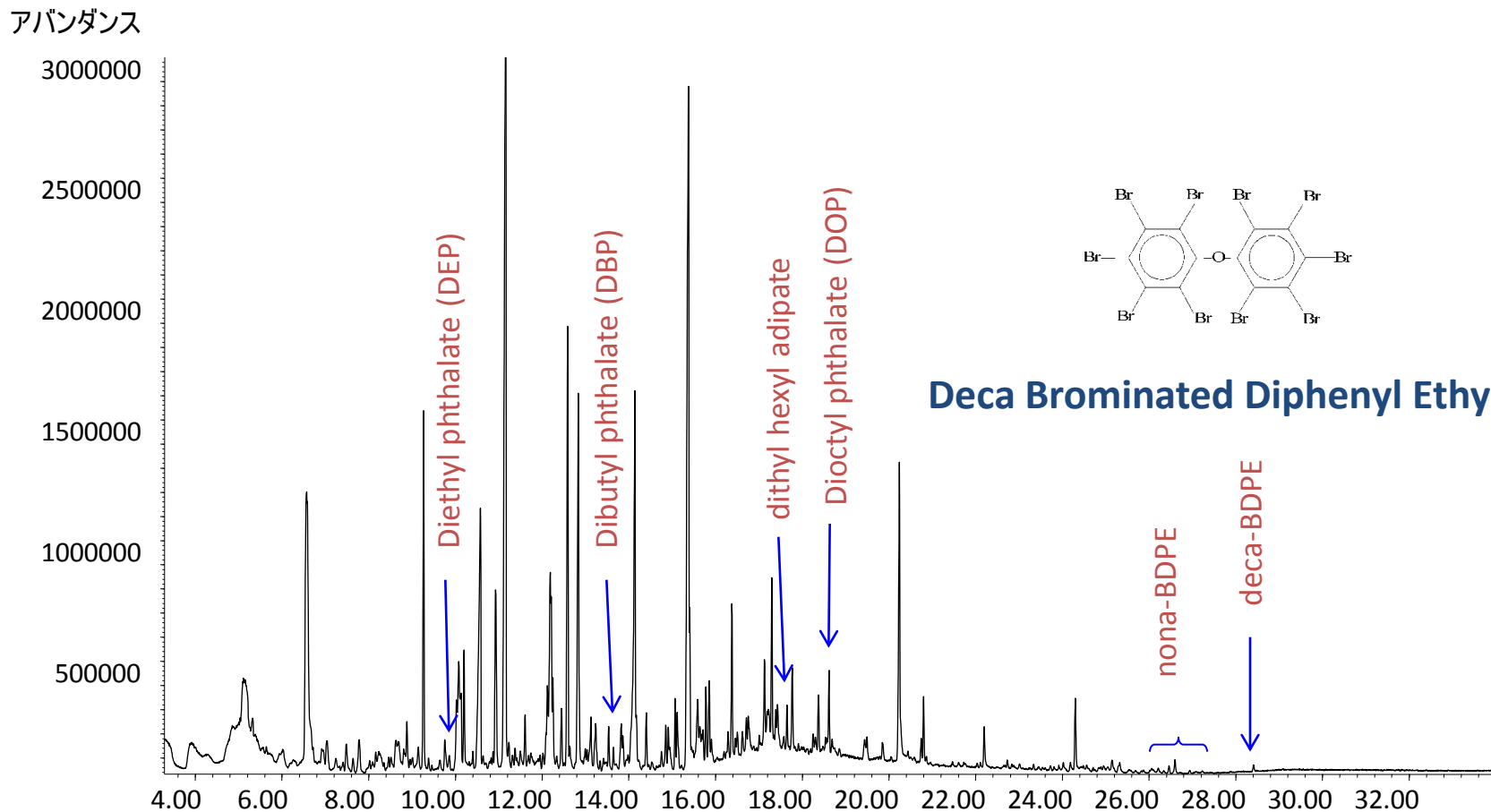


DB-1HT(15m x250um x0.1um), 50°C(2min)-10°C/min-320°C(hold), Inlet temp:320°C, Splitless

Ion source temp:250°C, Scan m/z:40-1000, Pyrofoil : 358°C, Py-period:15sec



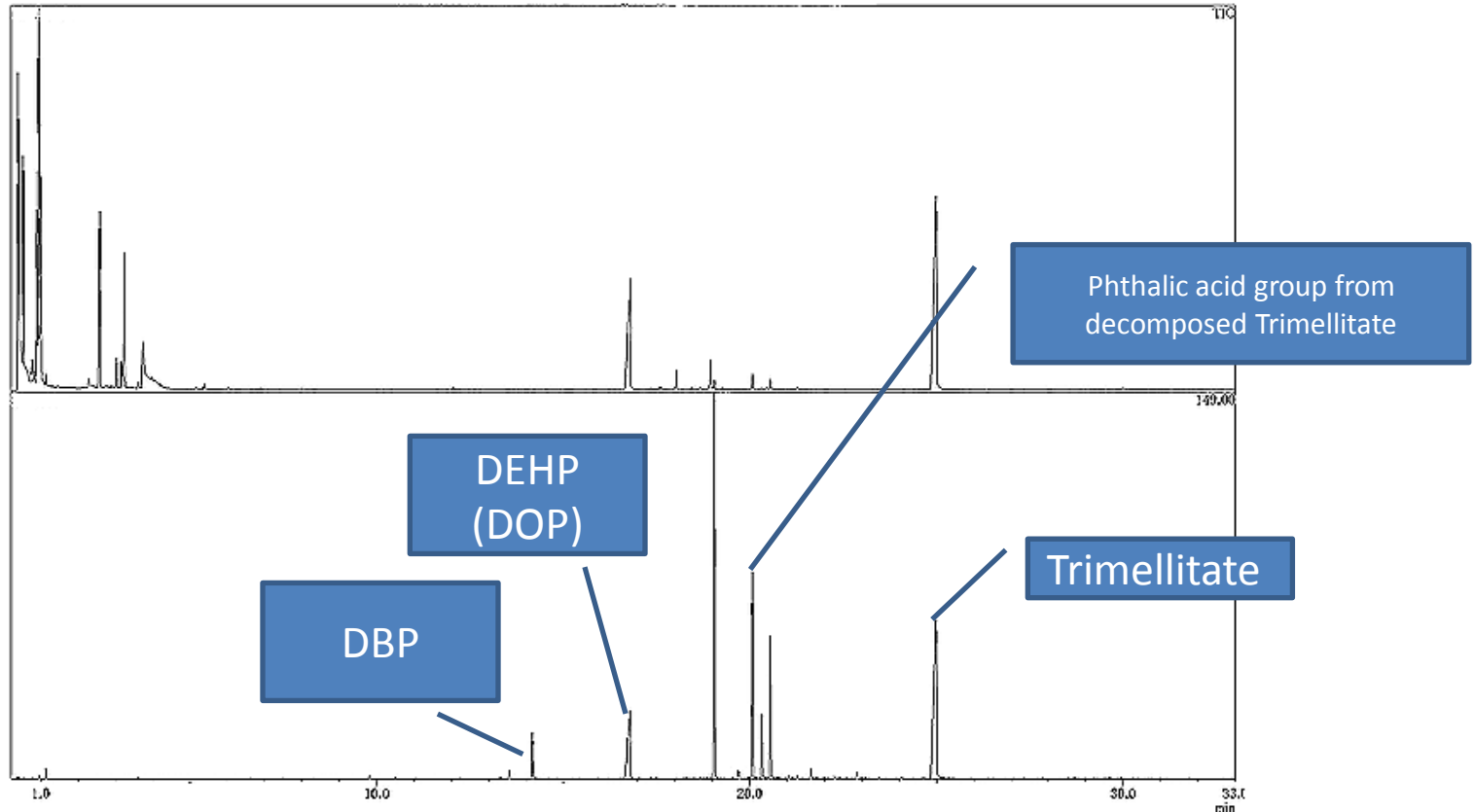
Plasticizer and Bromine Flame-retardant in Resin



DB-1HT(15m x250um x0.1um), 50°C(2min)-10°C/min-320°C(hold), Inlet temp:320°C, Splitless

Ion source temp:250°C, Scan m/z:40-1000, Pyrofoil :358°C, Py period:15sec

Wire coating



Analysis of Additives in Polymer

Easy Outgas analysis from various solid sample is possible.