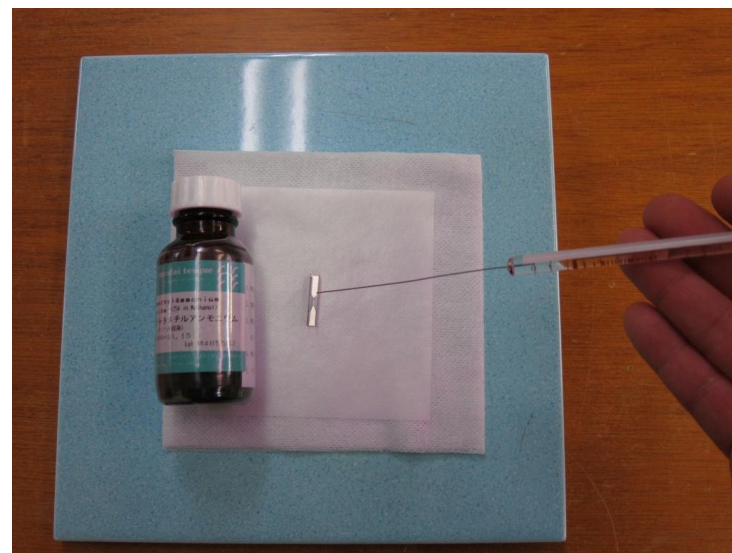
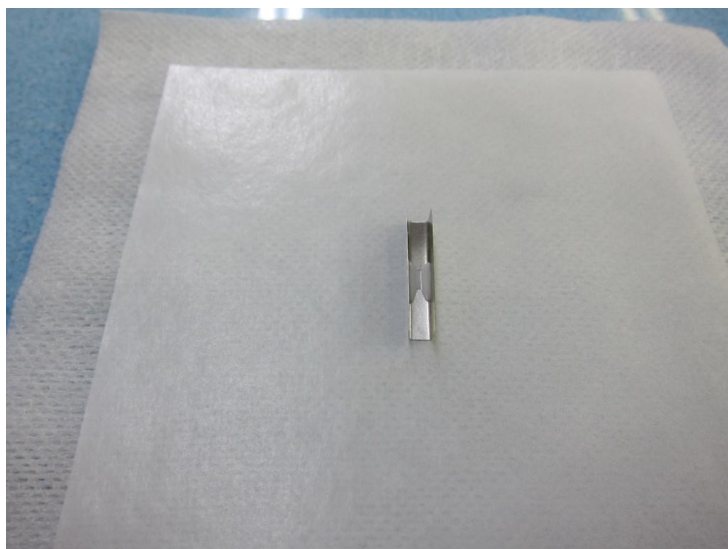


# Derivatization

- Normal Thermal Decomposition
- Methylation



Carboxylic acid, Alcohol, Phenol etc, these may not be detected with sharp peaks by GC column. Derivatize high polarity compounds and make peaks shaper to be detected.

# Emulsion

## Methyl acrylate injection

Normal Thermal Decomposition

Methylation

