

Curie Point Injector JCI-22

Japanese Sake



mini-PAT

Quartz Glass Sample Tube
ID: 4mm Length: 36mm
Absorbent :Tenax GR 25mg
Pyrofoil :F280 (280c)

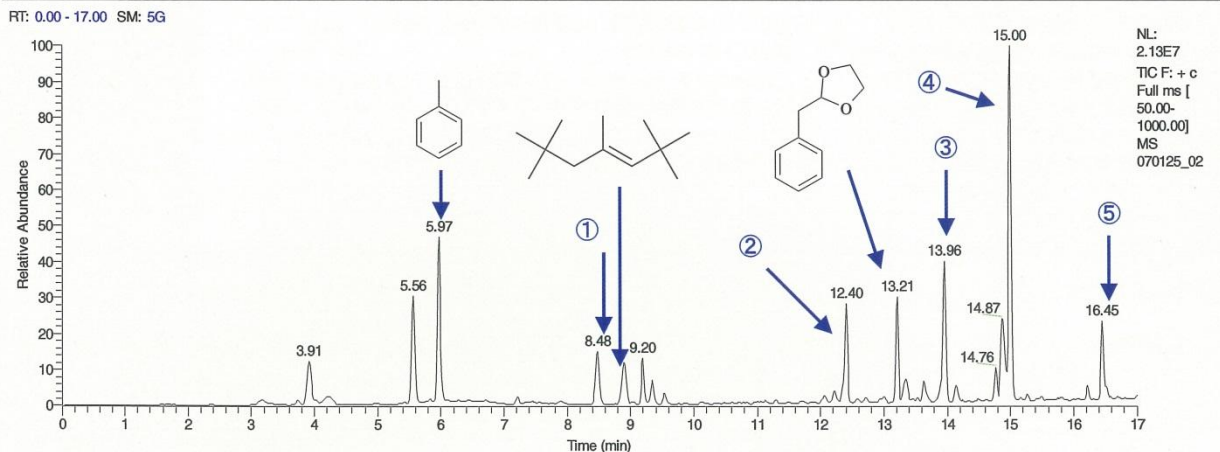
Soaked in sake for 4 hours and dry purged.

Pyrolysis	5 sec at 280c (mini-PAT)
Column	TR-WAX 0.25 mm id x 30m, 1.0 μ m film thickness
Oven Program	50c (1min) -10c/min-250c(10min)
Injector	240c
Flow rate	1.2mL/min
Split mode	1/10
Transfer line	250c
Ion Source	240c
Emission current	250 μ A
Mass range	m/z 50-1000

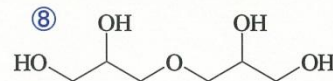
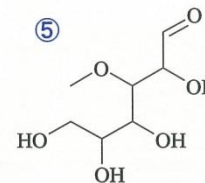
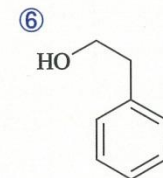
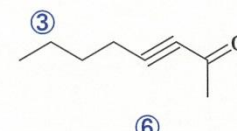
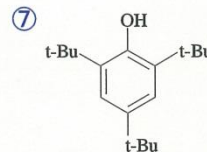
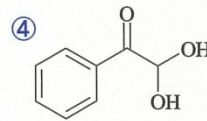
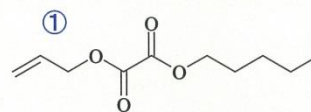
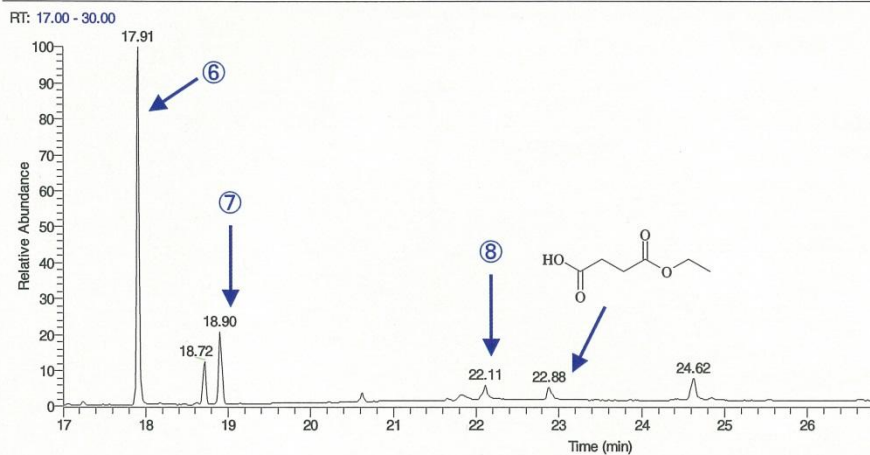


Curie Point Injector JCI-22

Japanese Sake



1	Oxalic acid allyl pentyl ester
2	3-Furaldehyde
3	3-Octyn-2-one
4	2,2-dihydroxy-1-phenyl ethanone
5	Methyl hexose
6	Phenyl ethyl alcohol
7	2,4,6-Tris(1,-dimethyl ethyl) phenol
8	Diglycerol



JCI-22
JAS-15M II

Japan Analytical Industry Co., Ltd