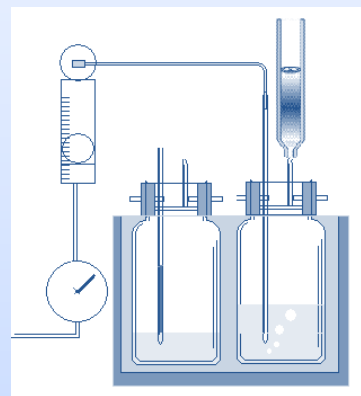


Curie Point Injector JCI-22

Odor Analysis White Wine and cork



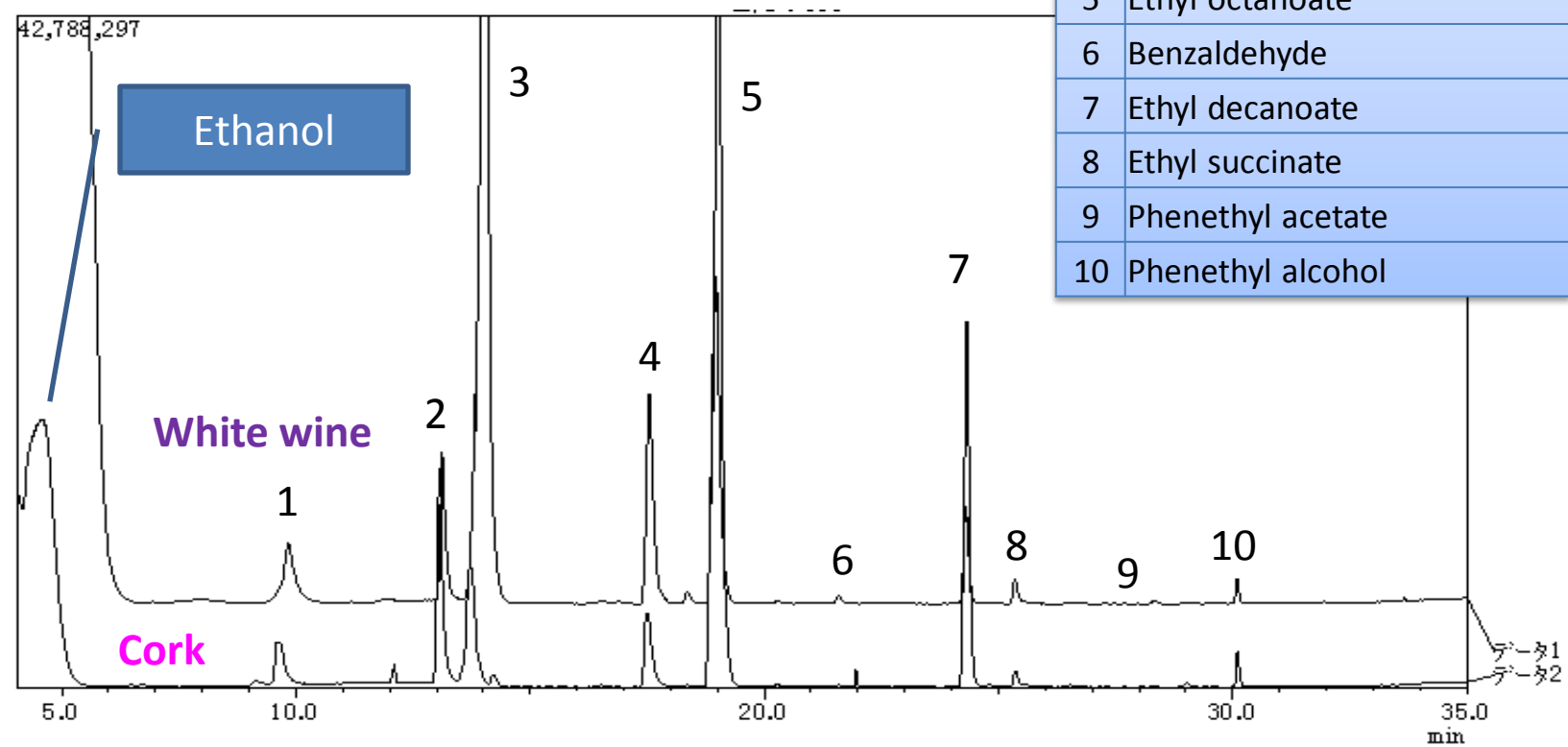
mini-PAT

Sampling	Sample	Wine 10 mL	Cork 1 g	GC	Inj. temp	250c		
	Temp	50c			Det. temp	250c		
	Time	10mins			Anal. Time	35mins		
	Flow GAS	N2			Total flow rate	32.9mL/min		
	Flow rate	50mL/min			Oven. Temp	Rate (c/min)	Temp (c)	Hold (min)
	Dry purge	0mL/min				-	35	6
						5	150	0
Py JCI-22	Purge	OFF				20	250	1
	Heater	OFF			Injector Split	1/30		
	Py-Time	15sec			Head pres	Rate (kPa/min)	Press (kPa)	Hold (min)
	Pressure	160kPa			-	46.9	0.01	
					100	75	0.5	
					-50	46.9	4.65	
					1.9	90.6	0	
					7.7	129	1	
				MS	Mass range	33-550		
					EM gain	1.45kv		
					Sol.cut	5min		
					Scan	5-35min		
				Column	HP-INNOWAX	Length	30m	
						I.D.	0.25mm	
						Film	0.25μm	

Curie Point Injector JCI-22

Odor Analysis White Wine and cork

1	Isoamyl acetate
2	Ethyl hexanoate
3	3-Methyl-1-butanol
4	Hexanol
5	Ethyl octanoate
6	Benzaldehyde
7	Ethyl decanoate
8	Ethyl succinate
9	Phenethyl acetate
10	Phenethyl alcohol



Curie Point Injector JCI-22

Odor Analysis Cookie

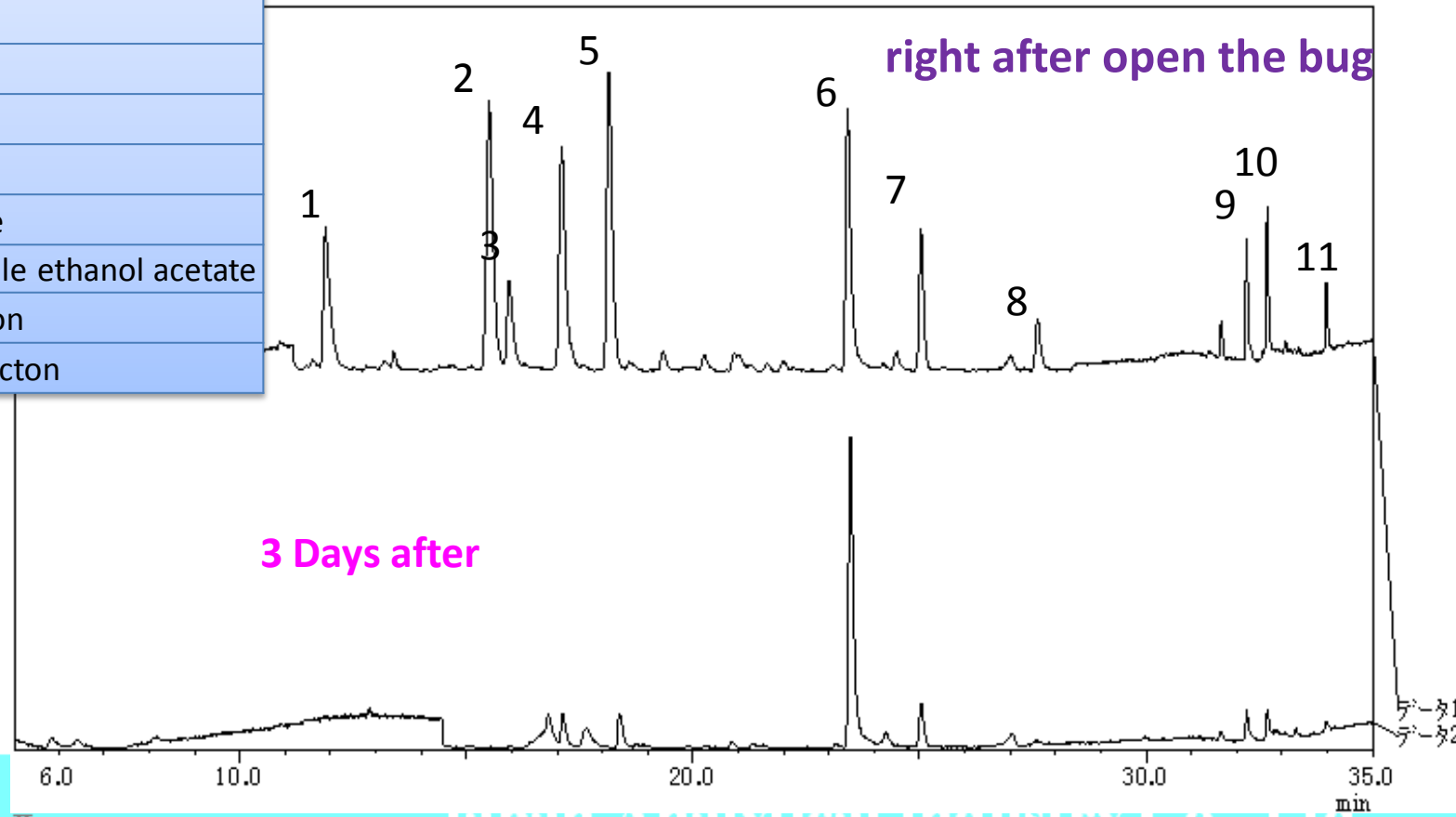
Comparison of “right after open the bug” and “3 days after”

				mini-PAT		Crushed cookie		GC	Inj. temp	250c		
									Det. temp	250c		
Anal. Time	35mins											
Total flow rate	32.9mL/min											
Oven. Temp	Rate (c/min)	Temp (c)	Hold (min)									
	-	35	6									
	5	150	0									
	20	250	1									
	Injector Split			1/30								
	Head pres	Rate (kPa/min)	Press (kPa)	Hold (min)								
		-	46.9	0.01								
		100	75	0.5								
		-50	46.9	4.65								
		1.9	90.6	0								
		7.7	129	1								
Sampling	Sample	New	3 days		MS	Mass range	33-550					
		1 g				EM gain	1.45kv					
	Temp	60c				Sol.cut	5min					
	Time	20mins				Scan	5-35min					
	Flow GAS	N2										
	Flow rate	50mL/min										
	Dry purge	0mL/min										
Py JCI-22	Purge	OFF			Column	HP-INNOWAX	Length	30m				
	Heater	OFF					I.D.	0.25mm				
	Py-Time	15sec					Film	0.25µm				
	Pressure	160kPa										

Curie Point Injector JCI-22 Odor Analysis Cookie

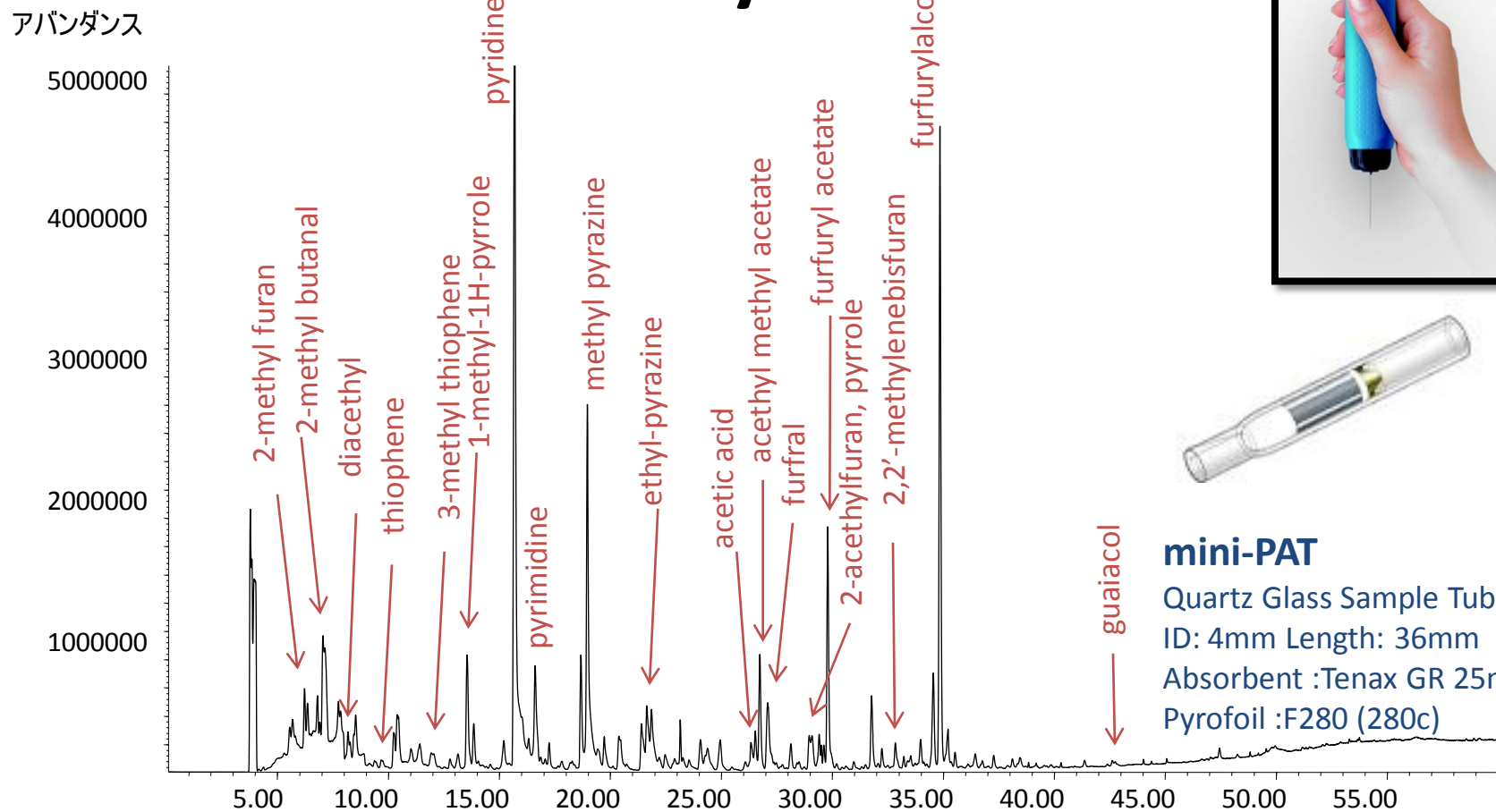
Comparison of “right after open the bug” and “3 days after”

1	S-Methyl butanethioate
2	Acetoin
3	Acetol
4	Ethyl lactate
5	3-Hexenol
6	Propylene glycol
7	Furfuryl alcohol
8	3-Hexenyl acetate
9	4-methyl-5-thiazole ethanol acetate
10	gamma-Decalacton
11	gamma-Dodecalacton



Curie Point Injector JCI-22

Odor Analysis Coffee



mini-PAT

Quartz Glass Sample Tube
ID: 4mm Length: 36mm
Absorbent : Tenax GR 25mg
Pyrofoil : F280 (280c)

DB-wax(60m x250um x0.5um), 60°C-3°C/min-220°C(hold), Inlet temp:250°C, Column flow:1.0ml/min

Ion source temp:230°C, Scan m/z29-400, Pyrolysis:280°C Absorbent : tenaxGR, Py period:15sec



JCI-22
JAS-15M II

Japan Analytical Industry Co., Ltd