



# Curie Point Injector JCI-22

## UV cured Adhesive

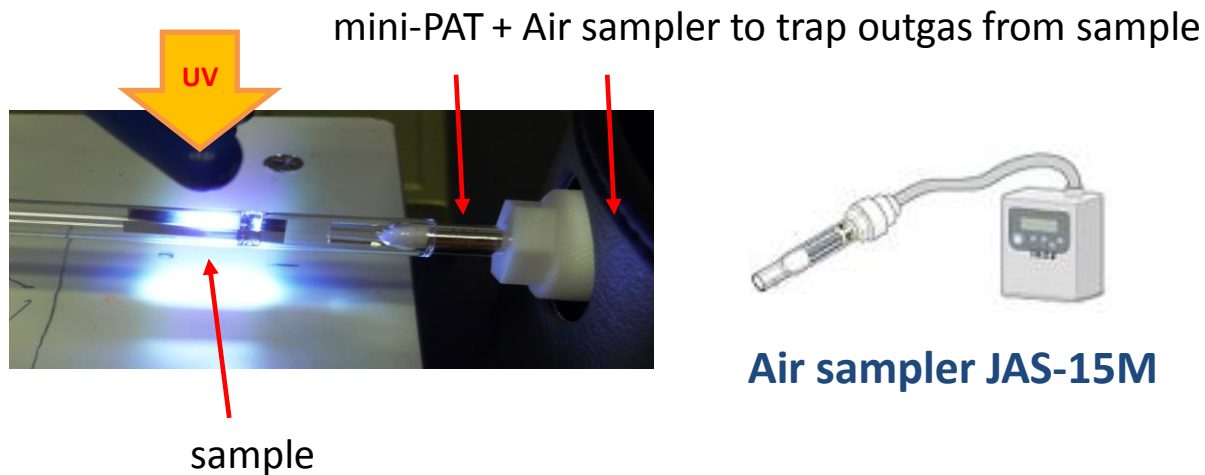
### *Point*

- Compare with outgas from the UV cured adhesive with and without UV light to detect photoinitiator related peaks.



### mini-PAT

Quartz Glass Sample Tube  
ID: 4mm Length: 36mm  
Absorbent :Tenax GR 25mg  
Pyrofoil :F315 (315c)



Air sampler JAS-15M



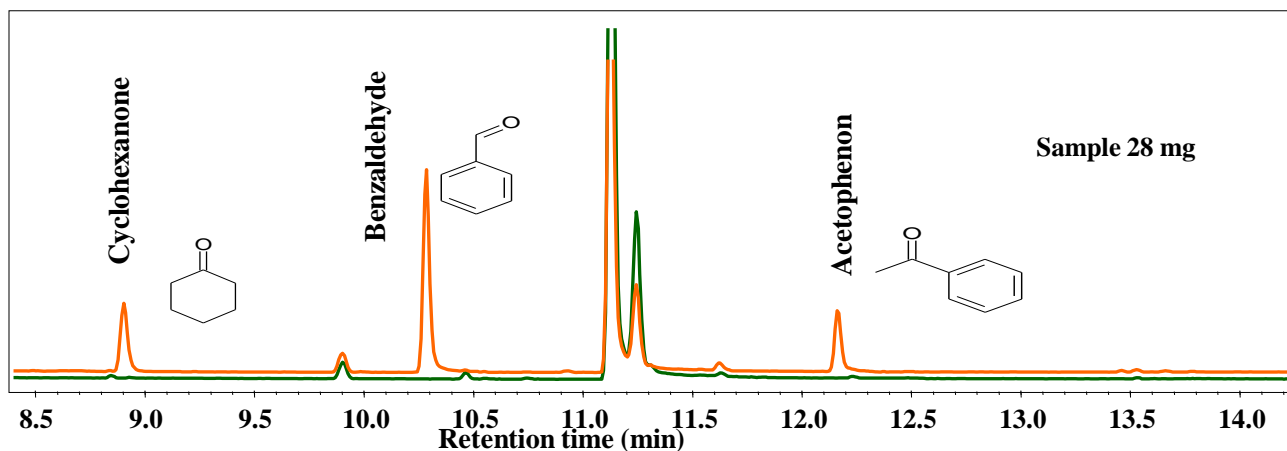
JCI-22  
JAS-15M II

Japan Analytical Industry Co., Ltd



# Curie Point Injector JCI-22 UV cured Adhesive

Compare outgas with reference (Sample 1) and UV cured (Sample 2) to detect outgas from photoinitiator



Both from Sample 1 and Sample 2, detected solvent peaks.

Only from Sample 2, outgas while UV is lit, detected peaks from photoinitiator, such as Cyclohexanone, Benzaldehyde, Acetophenon



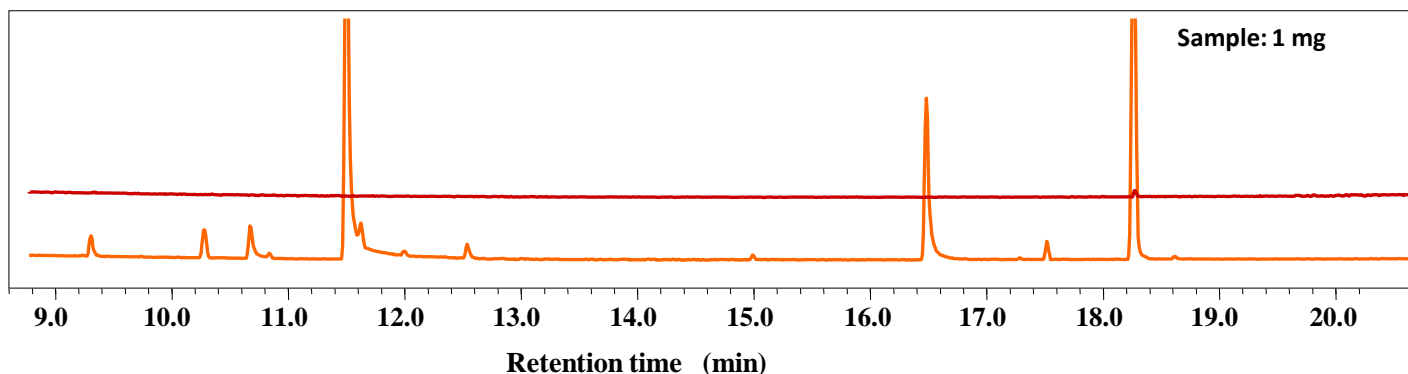
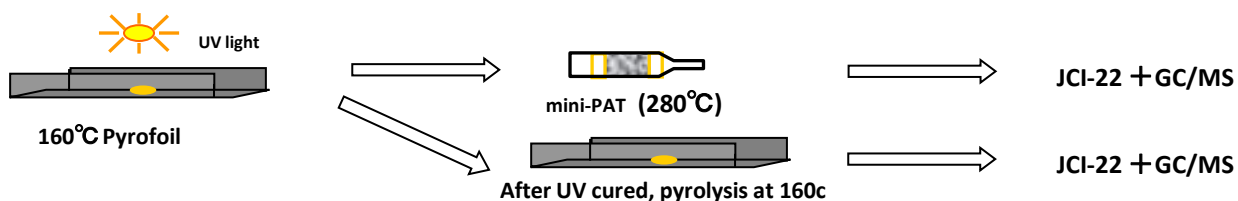
JCI-22  
JAS-15M II

Japan Analytical Industry Co., Ltd



# Curie Point Injector JCI-22 UV cured Adhesive

Check if UV curing is finished or not



After UV cured, pyrolysis at 160c

UV Cured  
UV 500 mW cm<sup>-2</sup> × 12 s

There was no outgas detected at 160c after UV cured. UV curing was finished.



JCI-22  
JAS-15M II

Japan Analytical Industry Co., Ltd