



Curie Point Injector JCI-22

Odor Analysis

Rush (Plant for Tatami)



- Sampling Chamber: 260 mL
- Trap tube: mini-PAT
- Purge gas: N₂ 10L
- Flow rate: 300mL/min
- Sampling Temp.: Room temp. (26°C)



mini-PAT with airsampler

Quartz Glass Sample Tube
ID: 4mm Length: 36mm
Absorbent :Tenax GR 25mg
Pyrofoil :F280

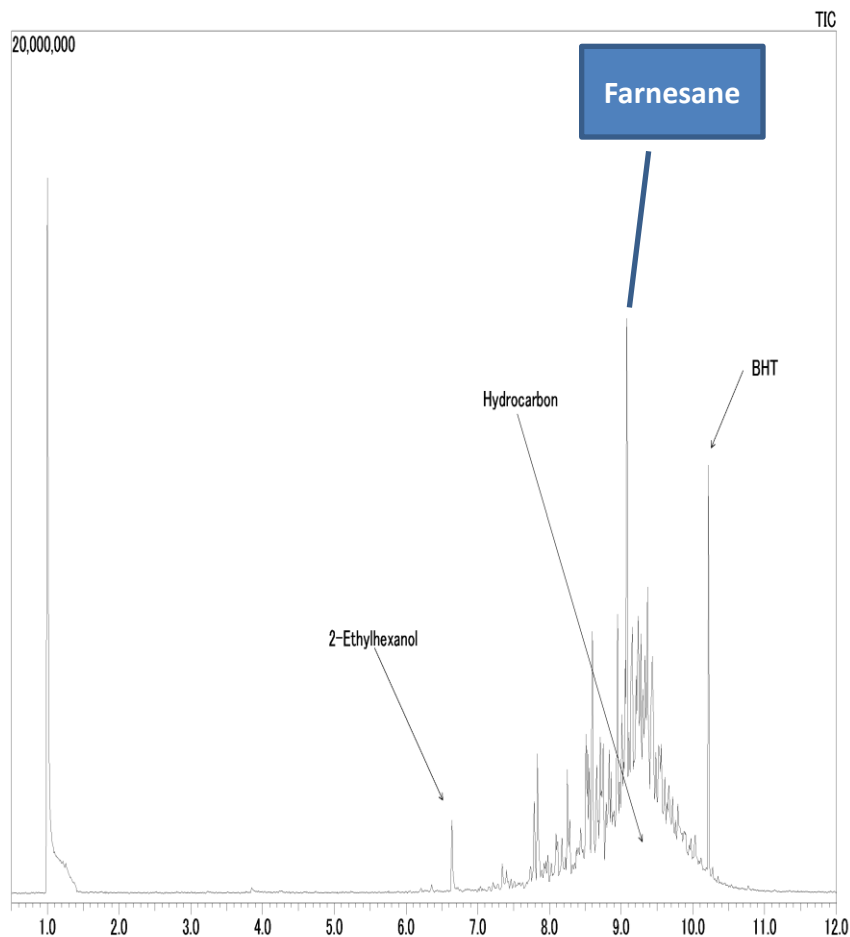


JCI-22
JAS-15M II

Japan Analytical Industry Co., Ltd

Odor Analysis

Rush (Plant for Tatami)



- GC-17A:
Inj.temp:320°C, Det.temp:320°C, Anal.time :20min, Septam purge:5ml/min(at100kpa)
- Oven temp:40°C(3min)-(20°C/min)-320°C(3min), Total flow rate:103.0ml/min
- Head pres:48.9kpa(3min)-(7.6kpa/min)-155.3kpa(3min), Velocity:36.1cm/sec
- QP-5000C: Mass range:33-550, EM gain:1.70kv, Sol.cut:0min, Scan:0.2-20min
- Column:DB-5MS:
ID=0.25mm, L=30m, T=0.25um, Serial No.:US6558166H
- JCI-22: Pre-heater:ON/Purge gas:OFF/Pyrolysis time:15sec

