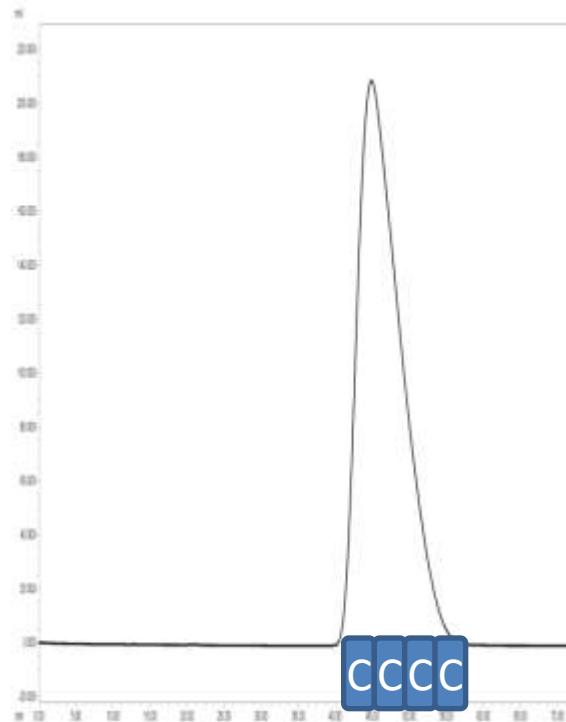
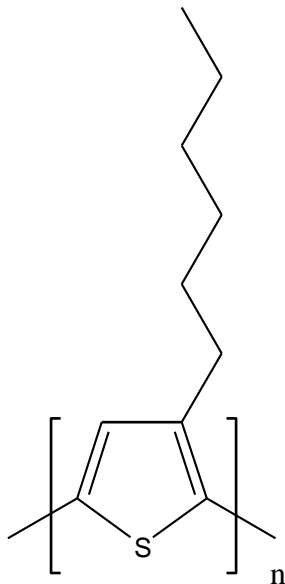


Inductive Polymer Slice Fraction (1)

- As an example of device used P3HT. Poly (3-hexylthiophene-2,5-diyl)
- Slice fraction for its higher performance and efficiency.



- Instrument: LC-9130 NEXT
- Column: JAIGEL-2H+3H
- Eluent: Chloroform
- Detector: UV-370 NEXT @ 254 nm